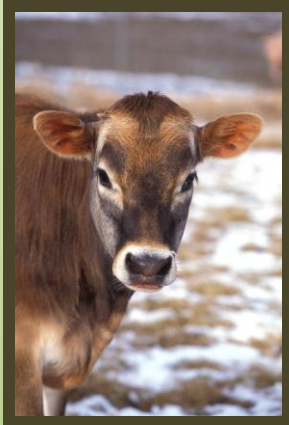


**21st ADSA Discover Conference on  
Food Animal Agriculture:**



**Improving Reproductive  
Efficiency of Lactating Dairy  
Cattle**

May 9-12, 2011

Eaglewood Resort and Spa  
Itasca, IL

Sponsored by the American Dairy  
Science Association\*

**Conference Format**

The Discover Conference Series was designed to provide a format and venue that encourages in-depth discussion of cutting-edge science.

ADSA Discover Conferences<sup>SM</sup> focus on topics of importance to the science of food animal agriculture and are held in a relaxed, informal setting. Sessions for this conference will allow ample time for discussion, networking and relaxation.

**Program Committee Co-chairs:**

Milo Wiltbank, UW Madison

Bill Thatcher, University of Florida

Ron Butler, Cornell University

Paul Fricke, UW Madison

Pete Hansen, University of Florida

Stephen LeBlanc, University of Guelph

José Santos, University of Florida

American Dairy Science Association

Discover Conference Series

Phone: 217/356-5146 Fax: 217/398-4119

Email: [adsa-discover@assoqh.org](mailto:adsa-discover@assoqh.org)

## Improving Reproductive Efficiency of Lactating Dairy Cattle

**Conference Objective** Poor reproductive efficiency in lactating dairy cattle limits economic viability of commercial dairy operations. Recently, reproductive management protocols, management methods, and nutritional programs have been developed that can improve reproductive efficiency. This conference is designed to bring the key individuals together to discuss these recent results and design methods to practically apply this information to commercial dairy farms. The outcome from this conference should not only allow us to determine what may be the best programs for current implementation on dairy farms but also help direct the course for future research in this critical area.

**Preliminary Conference Topics**

- Current state of reproductive efficiency in dairy cattle:
  - Epidemiology of reproduction in US dairy cattle
  - Genetics of reproduction in dairy cattle
  - Effects of management on reproduction.
- Specific Reproductive Changes in Dairy Cattle
  - Follicular cysts and anovulation
  - Factors underlying pregnancy loss in dairy cattle.
- Physiology of embryo development:
  - Role of oocyte in subsequent fertility in dairy cattle.
  - Factors regulating early embryo development in dairy cattle.
  - Uterine environment and reproductive efficiency in dairy cattle.
- Ovarian Function in Dairy Cattle:
  - Selection of single or multiple dominant follicles in dairy cattle.
  - Physiological and practical regulation of corpus luteum function.
- Designing protocols based on physiological principles
  - Important Principles for optimizing programs:
    - Discussion of specific programs: 5-day protocol, Double Ovsynch, and G6G
- Optimizing the Economics of Reproduction on a Dairy Herd
- Effects of Nutrition on Reproduction
  - Nutritional deficiencies in reproduction: Energy & Amino acids
  - Improving reproduction with nutritional supplements: Fat

**Who Should Attend?** Reproductive physiologists and other scientists with a research focus on improving reproduction in lactating dairy cows are encouraged to attend, along with professionals from academia and companies, veterinarians, private consultants, producers, dairy managers and others with stakes in dairy reproduction would benefit from this interactive program. Graduate Students and early career professionals are especially encouraged to attend.

**Registration** Registration postmarked by April 9, 2011 is \$375.00 for ADSA-ASAS-ARPAS members and \$425.00 for non-members, which includes sessions and most meals. After April 9, the registration fee will be \$475.00 member/\$525.00 non-member, and will be accepted on an availability basis. To optimize interaction among participants, registration will be limited to the first 150 applications received.

**Accommodations** All participants are responsible for making their own lodging reservations. The conference will be held at Eaglewood Resort and Spa in Itasca, IL. Reservations can be made online at the Conference Accommodations link at [http://www.adsa.org/discover/21stDiscover\\_2011.htm](http://www.adsa.org/discover/21stDiscover_2011.htm)

**Travel** The 106-acre Eaglewood Resort & Spa is strategically located in northwest Chicagoland, just a 35-minute drive from downtown Chicago, and 21 minutes west of O'Hare International Airport. The resort is easily accessible via major airports and roadways, and within reach of the area's spectacular attractions. Go to [http://www.eaglewoodresort.com/Location/location\\_directions.asp](http://www.eaglewoodresort.com/Location/location_directions.asp) for detailed driving instructions.



For complete conference information, including the latest program and registration materials, go to:

<http://www.adsa.org/discover/>