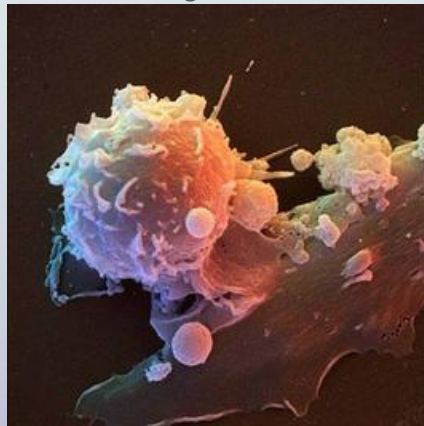


**23rd ADSA Discover Conference on
Food Animal Agriculture:**



**Bovine Immunology: The
Intersection of Innate and
Acquired Immunity**

May 29-June 1, 2012

Eaglewood Resort and Spa
Itasca, IL (near O'Hare Int'l Airport)
Sponsored by the American Dairy
Science Association®

Conference Format

The Discover Conference Series is designed to provide a format and venue that encourages in-depth discussion of cutting-edge science.

ADSA Discover ConferencesSM focus on topics of importance to the science of food animal agriculture and are held in a relaxed, informal setting. Sessions for this conference will allow ample time for discussion, networking and relaxation.

Program Committee Organizers:

Chris Chase, South Dakota State University
(Co-chair)

Barry Bradford, Kansas State University
(Co-chair)

Amelia Woolums, University of Georgia

Monica Foote, FDA

Clint Löest, New Mexico State University

Lorraine Sordillo, Michigan State
University

Matt Waldron, University of Missouri

American Dairy Science Association

Discover Conference Series

Phone: 217/356-5146 Fax: 217/398-4119

Email: adsa-discover@assoqhq.org

**Bovine Immunology: The Intersection of Innate and Acquired
Immunity**

Conference Objective

Recent and ongoing research indicates that the interaction between the innate and acquired branches of the immune response has a major impact on the ultimate outcome for any animal exposed to disease challenge. Speakers at this conference will present information on how disease, environment, management, and genetics impact the bovine immune response, and how management interventions such as those related to vaccination, nutrition, housing, and reproduction modulate the innate and acquired immune responses and impact bovine health and productivity.

Currently-available information indicates that there is much opportunity to improve the health and productivity of cattle and calves through management that maximizes effective immunity. This Discover Conference will provide a forum for presentations on the latest information in this area, and will foster interactions among attendees that should lead to future studies that advance knowledge and application of concepts related to bovine immunity and its impact on the wellbeing and productivity of cattle.

Conference Themes

- Immune System Effects on Calf Growth & Health
- Immunity in the Transition Period
- Vaccine Responsiveness
- Genetic Variation in Immune-Related Traits
- Management Interactions with Immunity

Who Should Attend? This conference will present information of interest to a wide range of individuals, including scientists and clinicians working in academia, advanced private practice, dairy and beef consultants, graduate students, government laboratories, and industry.

Registration Registration postmarked by April 29, 2012 is \$375.00 for ADSA-ASAS-ARPAS members and \$425.00 for non-members, which includes sessions and most meals. After April 29, the registration fee will be \$475.00 member/\$525.00 non-member, and will be accepted on an availability basis. To optimize interaction among participants, registration will be limited to the first 120 applications received.

Accommodations All participants are responsible for making their own lodging reservations. The conference will be held at Eaglewood Resort and Spa in Itasca, IL. Reservations can be made online at the Conference Accommodations link at http://www.adsa.org/discover/23rdDiscover_2012.htm

Travel The 106-acre Eaglewood Resort & Spa is strategically located in northwest Chicago, just 35 minutes from downtown and 20 minutes west of O'Hare International Airport. The resort is easily accessible via major airports and roadways, and within reach of the area's spectacular attractions. Go to http://www.eaglewoodresort.com/Location/location_directions.asp for detailed driving instructions.



For complete conference information, including the latest program and registration materials, go to:
<http://www.adsa.org/discover/>