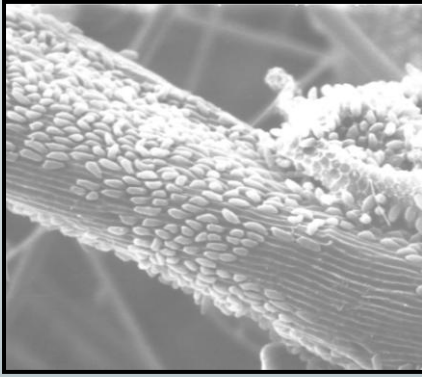


**24th ADSA Discover Conference on  
Food Animal Agriculture:**



**New Developments in Rumen  
Microbiology and Their  
Potential to Improve Animal  
Performance**

September 10-13, 2012

Northern Illinois University

Conference Center, Naperville, IL

Sponsored by the American Dairy  
Science Association

**Conference Format**

The Discover Conference Series is designed to provide a format and venue that encourages in-depth discussion of cutting-edge science.

ADSA Discover Conferences<sup>SM</sup> focus on topics of importance to the science of food animal agriculture and are held in a relaxed, informal setting. Sessions for this conference will allow ample time for discussion, networking and relaxation.

**Program Committee Organizers:**

Paul Weimer, USDA-ARS (Co-Chair)

Jeffrey L. Firkins, The Ohio State University  
(Co-Chair)

T. G. Nagaraja, Kansas State University

Todd R. Callaway, USDA-ARS

Monty Kerley, University of Missouri

Adegbola T. Adesogan, University of  
Florida

Tim A. McAllister, Agriculture and Agri-  
Food Canada Alberta

American Dairy Science Association

Discover Conference Series

Phone: 217/356-5146 Fax: 217/398-4119

Email: [adsa-discover@assoqhq.org](mailto:adsa-discover@assoqhq.org)

**New Developments in Rumen Microbiology and Their Potential to  
Improve Animal Performance**

**Conference Objective**

Rumen microbiological studies based on laboratory culture have contributed greatly to our understanding of how feeds are transformed into the VFA and microbial cells that provide nutrients to the cow. Over the last 20 years, the limitations of culture-based microbiological studies of almost all microbial habitats become apparent. At the same time, new culture-independent, molecular-based technologies have given us an unprecedented appreciation of the diversity and complexity of the rumen microbiome.

The recent launch of Hungate 1000, an international program for sequencing the genomes of a large number of rumen bacterial strains, is testament to the growing visibility and importance of rumen microbiology. These and other studies promise to provide the scientific basis for future advances in feeding and management for improved animal performance. Until recently, there have been relatively few attempts to relate differences in rumen microbial composition resulting from specific treatments, or differences in rumen microbial composition among cows, to important metrics of dairy production such as feed efficiency, milk yield, milk composition, and enteric methane production. This conference will be organized along an overarching theme: To integrate knowledge of the rumen microbial community, the host animal, and animal production in a manner that has not been attempted previously.

**Conference Themes**

- Methods for Assessing Microbial Communities and Activities
- The Ruminal Microbiome
- The Microbiome, Animal Production and Animal Health
- Ruminal Processes: Present Status and Future Opportunities
- Manipulating the Microbiome

**Who Should Attend?** This conference will interest research managers of feed and feed additive companies, government, and universities; technical representatives of dairy nutrition companies; dairy/beef nutrition consultants; veterinarians; university and government scientists interested in relating rumen microbiology to cow genomics and dairy performance. Graduate students are encouraged to attend.

**Registration** Registration postmarked by August 10, 2012 is \$375.00 for ADSA-ASAS-ARPAS members and \$425.00 for non-members, which includes sessions and most meals. After August 10, the registration fee will be \$475.00 member/\$525.00 non-member, and will be accepted on an availability basis. To optimize interaction among participants, registration will be limited to the first 120 applications received.

**Accommodations** All participants are responsible for making their own lodging reservations. The conference hotel is Country Inn & Suites, Naperville. There are also rooms available at both Fairfield Inn and Hampton Inn. Reservations can be made online at the Conference Accommodations link at [http://www.adsa.org/discover/24thDiscover\\_2012.htm](http://www.adsa.org/discover/24thDiscover_2012.htm)

**Travel** The NIU Conference Center in Naperville is located in the western suburbs of DuPage County. The center is easily accessible from Interstates 88 and 355, only 27 miles from both O'Hare and Midway International Airports.

For complete conference information, including the latest program and registration materials, go to:

<http://www.adsa.org/discover/>